

Summer Reading Assignment
9th Grade Honors English
2010-2011



English 9 Honors is also known as "Pre-AP" and the purpose is to prepare college-bound students for real-world experiences inside and outside the classroom. This is your first graded assignment for English 9 Honors, and it is due the first day of class. You will also be taking an AR test on your book. This assignment will comprise 10% of your grade for the first quarter.

We will be beginning the year with a horror and science fiction writing unit. Please read *Frankenstein* by Mary Shelley and complete the attached assignments in preparation for the unit. Copies of the novel will be available from the MHS office over the summer. Please drop by and sign one out. (There is information referenced below that may not be available in other versions.)

All components of the summer reading assignment are to be typed (Times Roman 12 point, double-spaced) and stapled together. Include a *creative cover page* indicating the book title, author, and the date you began reading the book. Allude to the main setting or characters of the novel in your artwork. This may be hand-drawn or computer generated. Be sure to clearly write your name on the inside of the cover.

Remember: You only have one chance to make a first impression...Make it a good one! Enjoy your reading and I'll see you in September!!

Mrs. Parker

Assignment:

1. "The Modern Prometheus": An Allusion (25 pts.)
2. Frankenstein Sketch (25 pts.)
3. Reviewing a Film Adaptation (25 pts.)
4. *Frankenstein* Letter Assignment (25 pts.)



1. "The Modern Prometheus": An Allusion (25 pts.)

From "The Historical Context of *Frankenstein*" at the beginning of the novel:

Frankenstein is subtitled "The Modern Prometheus," referring to the legend of Prometheus from Greek mythology...The allusion in the title suggests that Frankenstein is like Prometheus, in that Frankenstein is the creator of human life and one who was punished for stealing from a more powerful force. (x)

"The Story of Prometheus" is on p. 229 in the novel. Read the story and write a one-page essay explaining why Frankenstein is a modern Prometheus. In what way do Frankenstein's actions reflect the story of Prometheus? Is his fate similar to that of Prometheus? Explain the relationship between Frankenstein and Prometheus then use examples from the text to support your opinion.

2. *Frankenstein* Sketch (25 pts.)

Recreate a scene from *Frankenstein*. This can be hand drawn, computer generated (e.g., in MS Paint), a collage of images, etc. Be creative!! On the back, identify the chapter and page numbers being depicted. This should be at least 8 x 10.

3. Reviewing a Film Adaptation (25 pts.)

Many film adaptations have been made of *Frankenstein*. View one movie about Frankenstein and then complete the attached Frankenstein Movie Worksheet. Do not retype the worksheet! Neatly write your answers (in blue or black ink) and turn in the completed worksheet.

4. *Frankenstein* Letter Assignment (25 pts.)

Frankenstein begins and ends with letters from Walton to his sister. In fact, the whole story is told in letters. Using the attached Frankenstein Letter Assignment instructions, write one letter to Victor Frankenstein from the point of view of either William (brother), Elizabeth (sister), or Clerval (friend) discussing the philosophical question: How do you feel about Victor's pursuit of pure knowledge without any limits or taboos?

FRANKENSTEIN MOVIE WORKSHEET

Name of Movie: _____

Year Produced: _____

THEME -- Describe the theme of the movie in a couple of words, then, in two to three sentences, explain how these themes are different or the same as the novel.

The theme of this movie was: _____

This is different/the same (choose one) as the novel because: _____

SETTING

a) Place: _____

b) Time: _____

c) Weather conditions: _____

d) Mood or atmosphere (*gloomy, cheery, sad, peaceful*): _____

CONFLICT (check all that apply)

___ 1) Man vs. Man (external)

___ 2) Man vs. Nature (external)

___ 3) Man vs. Society (external)

___ 4) Man vs. Self (internal)

CHARACTER -- Identify and describe the characteristics of the main characters.

Character 1 _____ -- _____

Character 2 _____ -- _____

Character 3 _____

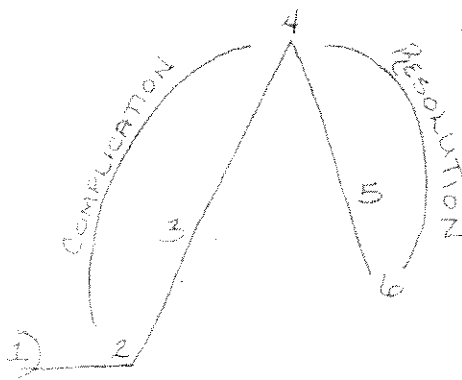
Protagonist: _____

Antagonist: _____

PLOT

1. Preliminary Situation: _____
2. Initial Incident: _____
3. Rising Action: _____
4. Climax: _____
5. Falling Action: _____
6. Conclusion (Resolution): _____

PLOT STRUCTURE



- ①. Preliminary Situation:
 - ❖ Introduces tone/mood
 - ❖ Introduces character/setting
 - ❖ Necessary background info
- ②. Initial Incident: Event that introduces the central conflict
- ③. Rising Action (Complications): Mini-conflicts that contribute to the rise in action; creates *SUSPENSE* (growing excitement)
- ④. Climax: Turning point of the story
Emotional high point
- ⑤. Falling Action: events that lead to solution (resolution)
- ⑥. Conclusion (resolution): outcome of the conflict

POINT OF VIEW -- Point of view is defined as the angle from which the story is told. Circle which point of view is reflective of the story you read, and write a sentence explaining why this is the best choice.

1. *First Person*: _____

2. *Third person (omniscient or limited)*: _____

Is the narrator reliable? (Circle one) Y N Why or why not? _____

MAIN DIFFERENCES -- Name three major differences between the film and the novel.

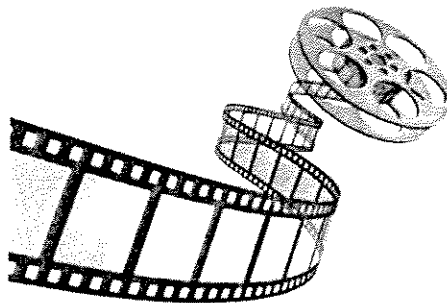
1. _____

2. _____

3. _____

SOCIAL/POLITICAL CLIMATE -- In what way did the film reflect the social and political atmosphere of the period in which it was produced? _____

Do not leave any blanks on this worksheet. If you don't understand what a word or meaning, look it up!!



Frankenstein Letter Assignment

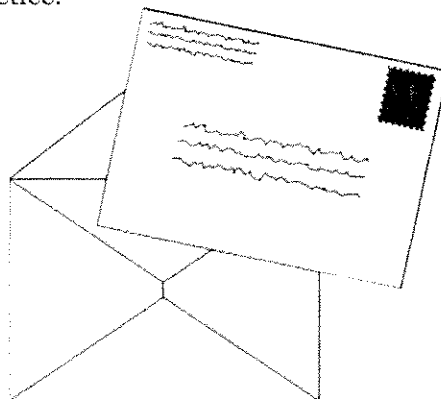
Write one letter to Victor Frankenstein from the point of view of either William (brother), Elizabeth (sister), or Clerval (friend). You will be writing in the voice of the character so please use first person ("I"). Try to take on the persona of the character you choose. Taking on the persona means that your words and ideas should sound like the character's voice in the novel and express the feelings and ideas of the character and his/her relationship with Victor.

The philosophical question your letter will address is: How do you feel about Victor's pursuit of pure knowledge without any limits or taboos?

1. Discuss the irresponsibility of Frankenstein in abandoning his creation to fend for himself.
2. Agree or disagree with Victor's decision to destroy the second creature.
3. Discuss the morality of making revenge a purpose of one's life.

Your one-page letter will respond to each of the above. As you write each part, cite quotes from the novel (at least two) and specific details from the text to support your ideas and opinions. To help build each part of the letter, try to have at three separate ideas that support your opinion and use quotes from the novel as proof or to illustrate your ideas. Be sure to discuss or explain the quotes and how they prove your opinions about each philosophical idea.

The following is an example of the format. This is business style format, which is not usually used for informal letters, but since this format is what we will be using in class, we will go with it here for practice.



July 23, 2010

Victor Frankenstein
Geneva, Switzerland

My dear (Brother) (Husband) (Friend) Victor:

I am given this opportunity to communicate with you from the afterlife, having been murdered by the creature you brought to life. I have been deprived of living my life by your arrogance in creating a life and not accepting responsibility for the moral instruction and guidance of that life...

(BODY HERE: SKIP A LINE BETWEEN PARAGRAPHS)

(CONCLUSION HERE)

Sincerely,

Sign your name here in ink

Type Your Name Here

